



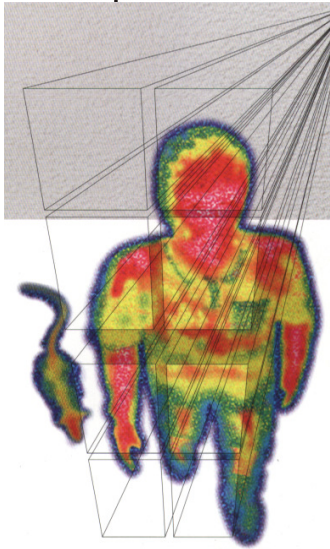
# Future Lock Security



275 Maroondah Hwy, Ringwood Victoria 3134  
 Phone: (03) 9870 2125 Fax: (03) 9879 7255

**Digital Alarm Systems**  
 Latest Technology Detectors,  
 Diallers & 24hr Monitoring,  
 Intercoms & CCTV,  
 Access Control Systems  
 Electronic Locking Devices  
**Complete Mobile Service**

Est...15<sup>th</sup> March 1991  
 Email sales@futurelock.com.au  
**Member ASIAL, MLAA, RCC**  
 ABN: 50 457 305 265  
 www.futurelock.com.au

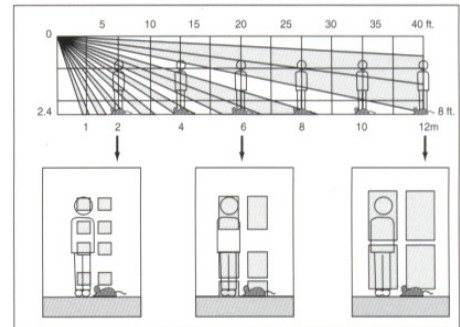


## Quad Passive Infrared Movement Detector **RX-40 Q**



**TECHNOLOGY FOR HIGHEST RELIABILITY**  
**\*Quad Zone Logic - Improved Patented Technology**

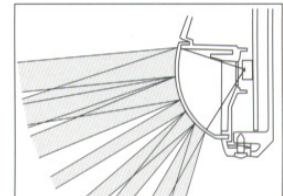
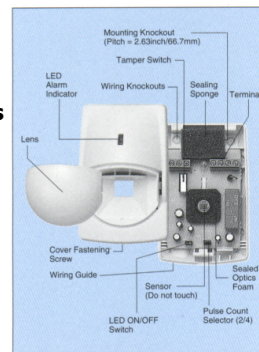
Quad Zone Logic provides multi segmented detection zones throughout the detection area. An alarm signal is created by the cumulated total IR energy of each zone. It is designed to provide 4 to 8 zones for a human sized object to create sharp and maximum signals for stable detection. Spot temperature changes, i.e. by rodents or curtains etc., may affect only one or two zones at the same time creating a smaller detection signal. These signals are further analyzed by the "ECO" Chip and signal processing circuit for accurate detection and filtering out of false alarms.



### QUAD ZONE LOGIC

Optex improves its patented "Multifocus Optics" technology to create "Quad Zone Logic" for accurate detection of humans. Using this logic the RX-40QZ has been designed to give extremely high false alarm protection with tolerance to spot temperature changes from curtains or small animals. Optex's Optical Quad Technology uses taller detection zones divided into upper and lower areas. It detects IR energy changes in both areas and then couples them for extremely accurate detections. Offering very high reliability in hostile areas.

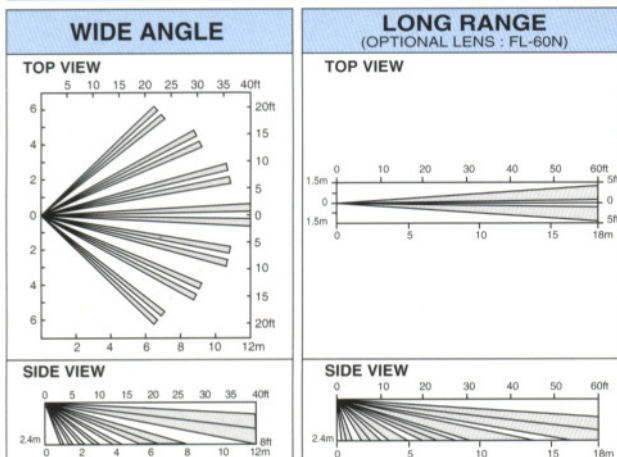
**Spherical Lens - Technology to Back Up Quad Zone Logic Obtains** an accurate focal length for each detection zone and maximizes the performance of Quad Zone Logic.



**Temperature Compensation Logic**  
 Eco chip includes temperature compensation circuit. It controls sensitivity to improve stability against changes in environmental conditions.

**PERFORMANCE**  
**ORFI Protection**  
 No alarm at 20V/m from 100MHz to 1 GHz

### DETECTION PATTERNS



### SPECIFICATIONS

Model	RX-40QZ
Detection Method	Passive Infrared
Coverage	Wide 40ft x 40ft (12m x 12m), 85° wide
Detection Zones	Wide: 78 zones
Mounting Height	5 ~ 8ft (1.5 ~ 2.4m)
Sensitivity	3.6° F (2° C) at 2ft/sec. (0.6m/sec.)
Detection Speed	1 ~ 5ft/sec. (0.3 ~ 1.5m/sec.)
LED Alarm Indicator	Switchable On/Off
Alarm Period	Approx. 2.5 sec.
Alarm Output	N.C., 28VDC, 0.2A max.
Tamper Switch	N.C., Open when cover is removed
Pulse Count	Approx. 20 sec. 2 or 4
Warm-up Period	Approx. 30 sec.
Power Input	9.5 ~ 16VDC
Current Draw	17mA (max.) at 12VDC
Weight	2.5 oz. (70g)
Operating Temperature	-4° F ~ +122° F (-20° C ~ +50° C)
Environmental Humidity	95% max.
RF Interference	No Alarm 20V/m

*FL-60N (Optional Lens for Long Range Curtain Pattern)	
Coverage	LONG: 60ft x 6ft (18m x 1.8m) Long Range
Detection Zones	LONG: 20 zones

### DIMENSIONS

